

BEN  
AFFLECK

MATT  
DAMON

LINDA  
FIORENTINO

SALMA  
HAYEK

JASON  
LEE

JASON  
MEWES

ALAN  
RICKMAN

CHRIS  
ROCK

GET 'TOUCHED' BY AN ANGEL.

25<sup>TH</sup> ANNIVERSARY

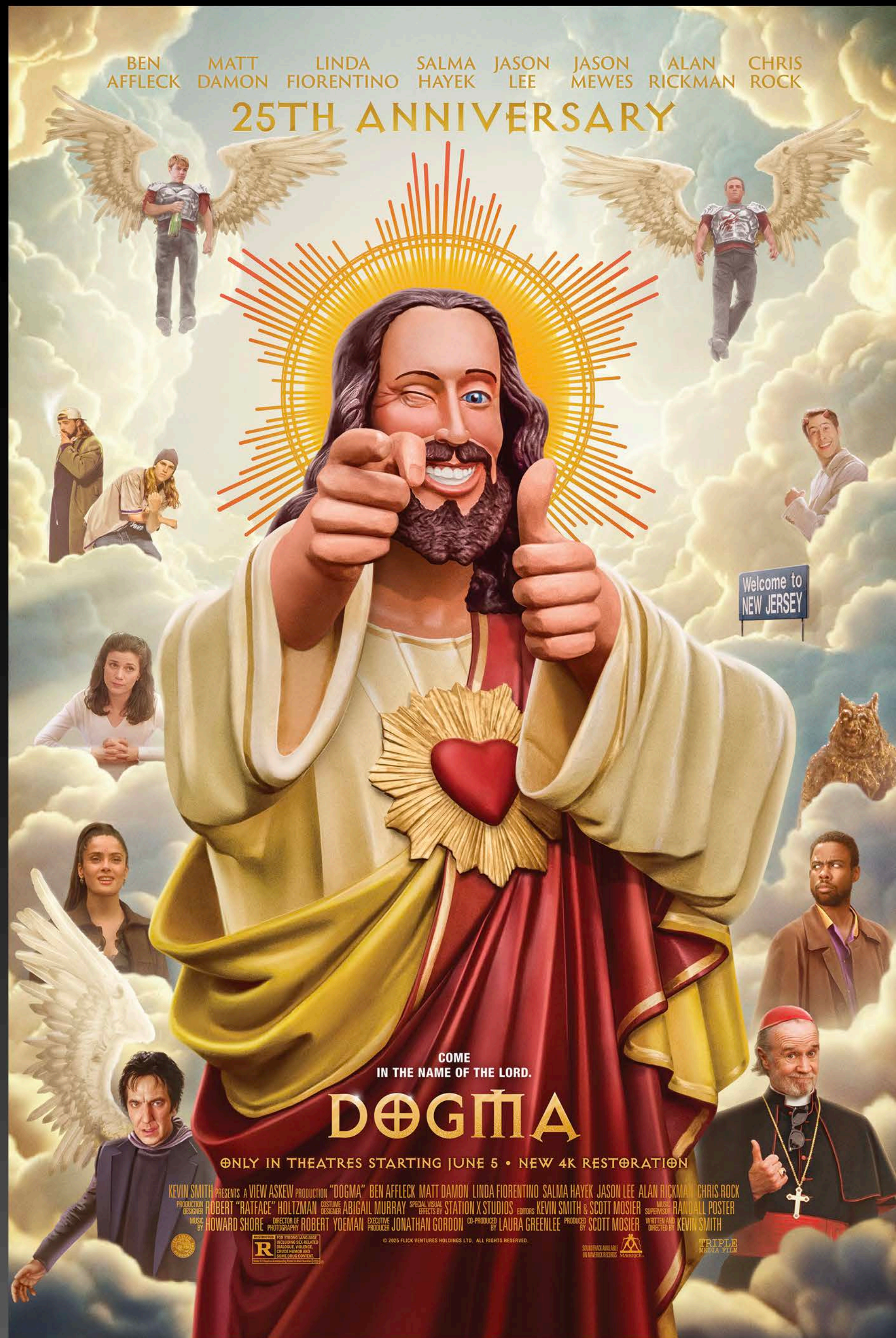
# DOGMA



TRIPLE MEDIA FILMS PRESENT IN ASSOCIATION WITH LIONSGATE FILMS A VIEW ASKEW PRODUCTION "DOGMA" BEN AFFLECK MATT DAMON LINDA FIORENTINO SALMA HAYEK JASON LEE JASON MEWES ALAN RICKMAN CHRIS ROCK  
 MUSIC BY XXXXXXXX XXXXXXXX AND XXXXXXXX COSTUME DESIGNER XXXXXXXX EDITOR XXXXXXXX EXECUTIVE PRODUCERS XXXXXXXX XXXXXXXX XXXXXXXX XXXXXXXX XXXXXXXX XXXXXXXX XXXXXXXX XXXXXXXX XXXXXXXX XXXXXXXX  
 PRODUCED BY XXXXXXXX XXXXXXXX XXXXXXXX XXXXXXXX XXXXXXXX XXXXXXXX XXXXXXXX XXXXXXXX XXXXXXXX XXXXXXXX  
 WRITTEN AND DIRECTED BY KEVIN SMITH  
 © 2004 TEMPLE HILL FILMS, L.L.C. ALL RIGHTS RESERVED.







**Come  
in the name of the lord.**

*Dogma* (1999), the satirical comedy directed by Kevin Smith

Runtime: 130min (2hrs 10min)

Rated: R

4k Remaster with 5.1 Dolby Surround

**Logline:**

*Two fallen angels, seeking redemption, plan to exploit a loophole in God's plan to return to Heaven, but their mission is thwarted by a group of unlikely allies who must prevent the end of the world.*

**Synopsis:**

*Dogma* follows two fallen angels, Bartleby (Ben Affleck) and Loki (Matt Damon), who discover a loophole in Catholic doctrine that could allow them to return to Heaven, threatening the very fabric of existence. To stop them, a group of unlikely heroes—including a faith-struggling woman (Linda Fiorentino), the erased 13th Apostle (Chris Rock), and Jay (Jason Mewes) and Silent Bob (Kevin Smith)—must prevent the apocalypse. With irreverent humor and sharp satire, *Dogma* explores faith, salvation, and the human experience.



# DOGMA

25th Anniversary

Celebrating its 25th anniversary, *DOGMA* is one of the most iconic and controversial comedies of all time!

Directed by KEVIN SMITH, featuring an *ALL-STAR* cast including BEN AFFLECK, MATT DAMON, SALMA HAYEK, CHRIS ROCK, ALAN RICKMAN, GEORGE CARLIN, and LINDA FIORENTINO

*DOGMA* is set for a HISTORIC re-release on the largest platform ever for a 25-year-old film.



Starting June 5th, the film will be showcased across 1,500+ theaters in North America, from AMC, Regal, Cinemark, and others bringing this beloved *CULT CLASSIC* to audiences.



Upon its original release, *DOGMA* received widespread acclaim, including a 3.5-star rating from the legendary Roger Ebert. It quickly became an audience favorite!

Grossing **\$43 million** worldwide, marking Kevin Smith's biggest box office hit to date.

## Dogma



COMEDY

125 minutes · R · 1999

Roger Ebert November 12, 1999 5 min read

[Kevin Smith's](#) "Dogma" grows out of an irreverent modern Catholic sensibility, a byproduct of parochial schools, where the underlying faith is taken seriously but the visible church is fair game for kidding. For those reared in such traditions, it's no reach at all to imagine two fallen angels finding a loophole to get back into heaven. I can remember passionate debates during religion class about whether, if you missed your Easter duty, you could double back across the International Date Line and cover yourself.





While *DOGMA* had limited international distribution, many territories never had the chance to experience this groundbreaking film.

Now, for the first time ever, we're offering **all** international markets the opportunity to discover *DOGMA* in all its glory!

The film will be re-released in stunning remastered 4K for its 25th anniversary!

We are planning an extensive global publicity campaign throughout May and June. The worldwide media is buzzing with excitement over *DOGMA*'s revival, and the support from the original cast will ensure a spectacular event at this year's "Cannes Classics"





Don't miss the chance to be part of this unforgettable cinematic celebration.

**“THE RESURRECTION OF DOGMA!”**

**This epic cast is hot and ready to captivate new audiences across the globe!**



CONTACT: [alessandra@triplemediafilm.com](mailto:alessandra@triplemediafilm.com) +1 (929) 237-0080